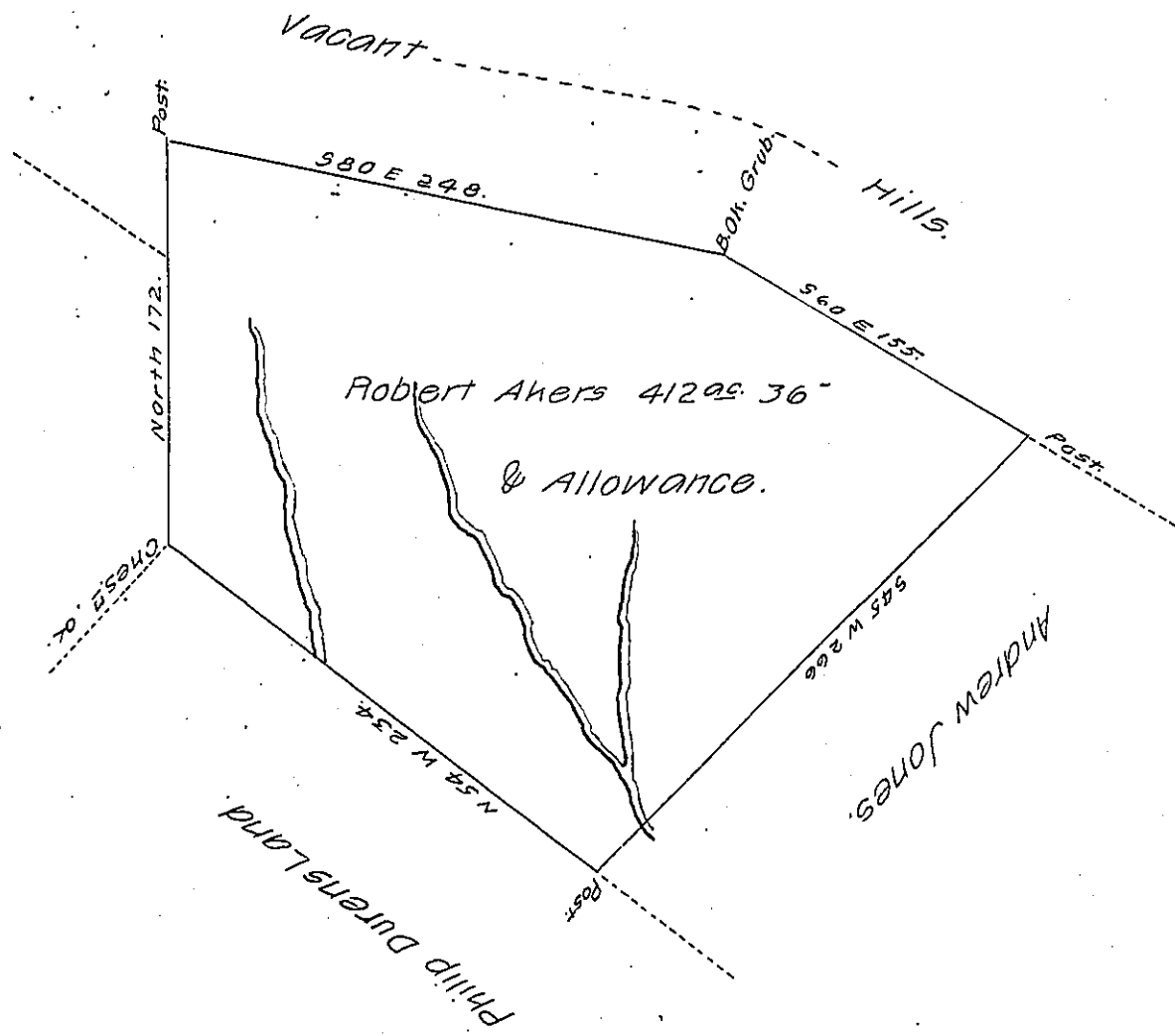


John Philip Mehrenner.



Situate on the Waters of the North fork of Brush Creek in Providence Township Bedford County Including Improved Land Containing Four Hundred and twelve Acres & thirty Six Perches and the Usual Allowance of Six per Cent for Roads & C. Surveyed for Robert Akers the Twenty fifth Day of September 1796. In Pursuance of a Warrant Dated June the twenty-Second 1796.

George Woods, D.S.

To Dan L. Brodhead, Esq<sup>r</sup>, S.G.

IN TESTIMONY that the above is a copy of the original remaining on file in the Department of Internal Affairs of Pennsylvania, made conformably to an Act of Assembly approved the 16th day of February, 1833, I have hereunto set my Hand and caused the Seal of said Department to be affixed at Harrisburg, this twenty fifth day of October, 1906.

*George A. Brown*  
 Secretary of Internal Affairs.